

# ELVIRA

548,666 cbft / 6,244 sqm / 6,650 pallets



## General

Built	January-2000	International	<b>GT</b> 10,532.00	<b>NT</b> 5,406.00
Flag	Liberia	Panama Canal		9,084.00
Port of Registry	Monrovia	Suez Canal		9,119.27
Callsign	A8IP2			
IMO/Lloyds nr	9202869		<b>Draft</b>	<b>DWAT</b>
Length over all [m]	151.99	Tropical	9.67	12,734
Beam [m]	23.00	Summer	9.67	12,734
Depth [m]	13.00	Winter	9.67	12,734
Bowthruster(s)	-			
		Permanent Ballast		733

## Reefer

Holds	4
Hatches	4
Compartments	16
Minimum Deckheight [m]	2.20 (excl local areas)
Allowable weight of forklift including cargo	maximum 6 mt (Forklift to be equipped with minimum 4 non hard rubber airtyres)
Temperature zones	8
Cooling sections	1A   1BCD   2AB   2CD   3AB   3CD   4AB   4CD
Temperature range [dC]	-30/+15
Air circulations [/hr]	90
Air renewals [/hr]	4
USDA equipped	Yes, valid until 01-September-2020
Controlled Atmosphere	CA pre-piped
Modified Atmosphere	No equipment on board



# ELVIRA

548,666 cbft / 6,244 sqm / 6,650 pallets

## Classification Details

Classification Society	Bureau Veritas (BV)
Main Class symbols	I, +HULL, +MACH
Service Notations	+Refrigerated cargo ship, Equiped for carriage of containers
Navigation Notations	Unrestricted Navigation
Additional Class Notations	+REF-CARGO-AIRCONT
Machinery	+MACH
Equivalent Finnish/Swedish	
Ice Strengthening	-

## Reefer Compartment Capacity Breakdown

	Hold 1		Hold 2		Hold 3		Hold 4		Total	
	Cbft	Sqm	Cbft	Sqm	Cbft	Sqm	Cbft	Sqm	Cbft	Sqm
A	45,265	488.16	43,548	461.72	44,965	479.41	44,996	479.25	178,774	1,908.54
B	25,978	307.97	37,352	435.83	39,924	480.42	39,681	475.58	142,935	1,699.80
C	20,234	215.27	31,000	380.71	38,749	475.67	35,093	432.12	125,076	1,503.77
D	8,595	106.52	26,323	282.79	37,271	434.05	29,692	308.29	101,881	1,131.65
<b>Total</b>	<b>100,072</b>	<b>1,117.92</b>	<b>138,223</b>	<b>1,561.05</b>	<b>160,909</b>	<b>1,869.55</b>	<b>149,462</b>	<b>1,695.24</b>	<b>548,666</b>	<b>6,243.76</b>

### Hold 1- 4 Legend

Non insulated Deck, air passes through (aka Spar Deck)

Insulated, air tight Deck or Tanktop

Non Insulated, air tight Deck

## Hatch sizes

	Hold 1	Hold 2	Hold 3	Hold 4
	l x b	l x b	l x b	l x b
Deck	13.00 x 7.85	13.00 x 7.85	13.00 x 7.85	13.00 x 7.85
A	13.00 x 7.85	13.00 x 7.85	13.00 x 7.85	13.00 x 7.85
B	9.00 x 5.80	13.00 x 7.85	13.00 x 7.85	13.00 x 7.85
C	6.00 x 4.20	13.00 x 7.85	13.00 x 7.85	13.00 x 7.85

Container Carrying Capacity	Max FEU's	Add. TEU's	Max TEU's	Add. FEU's	
<b>On Weather Deck and Hatches</b>					
Empty Positions	Standard	106	0	212	0
Max Stackweight	Standard	106	0	212	0
Max Stackweight - Self-sustained	Standard	106	0	212	0
<b>Reefer Hold</b>					
Empty Positions	Standard	36	0	72	0
Max Stackweight	Standard	36	0	72	0
Max Stackweight - Self-sustained	Standard	36	0	72	0
Empty Positions	High Cube	36	0	72	0
Max Stackweight - Self-sustained	High Cube	36	0	72	0

'Max Stackweight' and 'Max Stackweight - Self-sustained' are the number of laden containers that can be loaded basis the maximum stackweight, calculating 26 mt gross for a laden FEU and 14 mt gross for a laden TEU

Above figures are as per vessel's technical layout. Actual container intake is subject to master's approval and depending on stability, stackweight and visibility.



# ELVIRA

548,666 cbft / 6,244 sqm / 6,650 pallets

## Standard Voyage Container Carrying Capacity

Nr of High Cube (9.5') Reefers	96
of which Selfsustained	96

*'Standard Voyage' = voyage from Panama Canal to Rotterdam, with a full cargo of bananas in the holds and departing with full bunker tanks. Containers on this voyage are considered to weigh 26 mt gross.*

## Reefer Plugs

Nr. of electrical Reefer Plugs	106
--------------------------------	-----

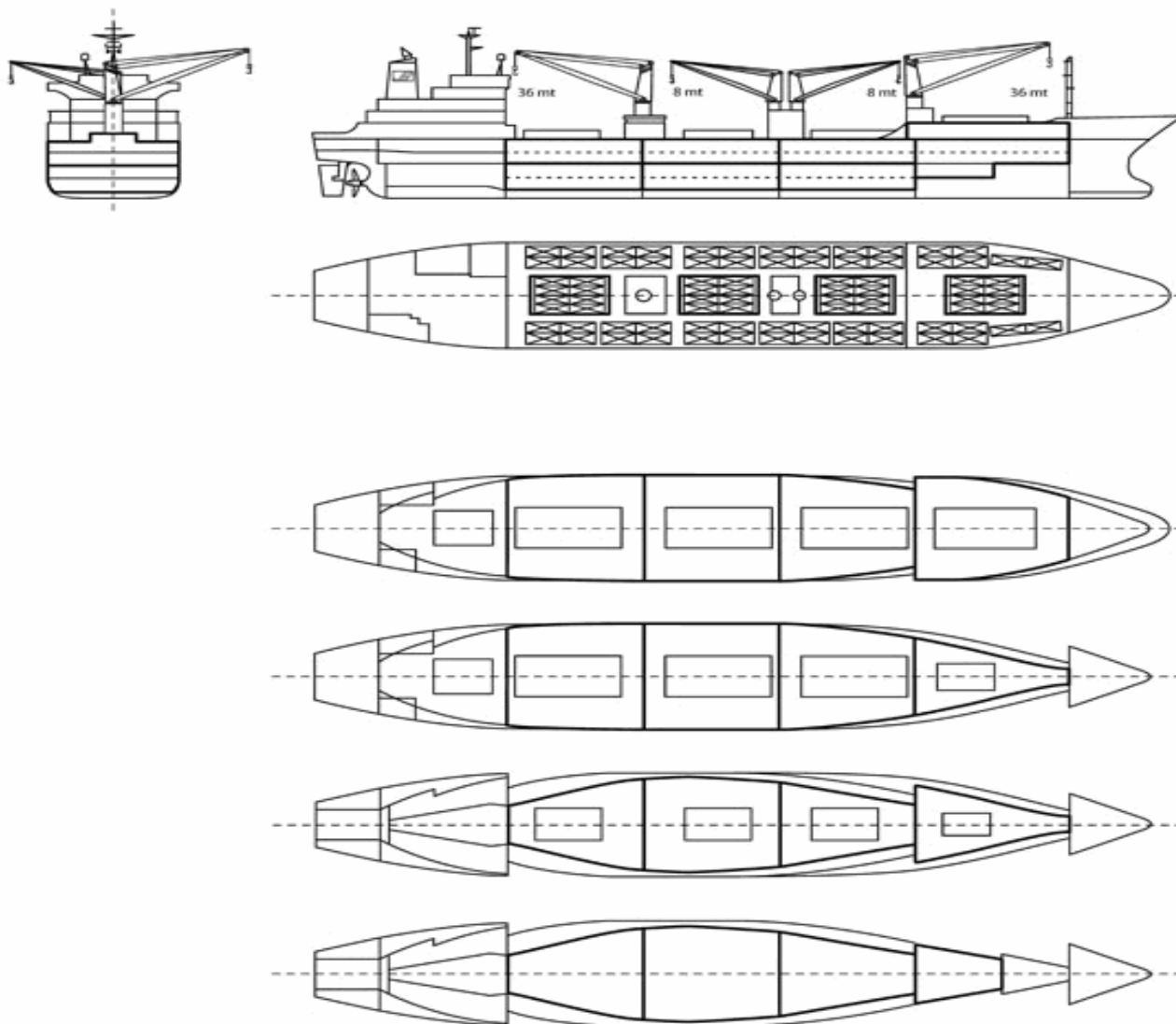
## Cargo Gear

2 Cranes x 36.0 mt  
2 Cranes x 8.0 mt



# ELVIRA

548,666 cbft / 6,244 sqm / 6,650 pallets



## General Remarks

- Pallet Intake figures are indication only. The figures are based on a stowage factor of 1.32 pallet/sqm in reefer holds, full load of reefer containers based on the standard voyage with 20 pallets in each container

