

EMERALD

548,718 cbft / 6,244 sqm / 6,650 pallets



General

Built	January-2000	International	GT 10,532.00	NT 5,406.00
Flag	Malta	Panama Canal		9,084.00
Port of Registry	Valletta	Suez Canal		5,406.00
Callsign	9HA3770			
IMO/Lloyds nr	9202857		Draft	DWAT
Length over all [m]	151.99	Tropical	9.67	12,734
Beam [m]	23.00	Summer	9.67	12,734
Depth [m]	13.00	Winter	9.67	12,734
Bowthruster(s)	-			
		Permanent Ballast		696

Reefer

Holds	4
Hatches	4
Compartments	16
Minimum Deckheight [m]	2.20 (excl local areas)
Allowable weight of forklift including cargo	maximum 6 mt (Forklift to be equipped with minimum 4 non hard rubber airtyres)
Temperature zones	8
Cooling sections	1A 1BCD 2AB 2CD 3AB 3CD 4AB 4CD
Temperature range [dC]	-30/+15
Air circulations [/hr]	90
Air renewals [/hr]	4
USDA equipped	Yes, valid until 01-August-2020
Controlled Atmosphere	CA pre-piped
Modified Atmosphere	No equipment on board



EMERALD

548,718 cbft / 6,244 sqm / 6,650 pallets

Classification Details

Classification Society	Bureau Veritas (BV)
Main Class symbols	I, +HULL, +MACH
Service Notations	+Refrigerated cargo ship, Equiped for carriage of containers
Navigation Notations	Unrestricted Navigation
Additional Class Notations	+REF-CARGO-AIRCONT
Machinery	+MACH
Equivalent Finnish/Swedish	
Ice Strengthening	-

Reefer Compartment Capacity Breakdown

	Hold 1		Hold 2		Hold 3		Hold 4		Total	
	Cbft	Sqm	Cbft	Sqm	Cbft	Sqm	Cbft	Sqm	Cbft	Sqm
A	45,347	489.21	43,758	462.52	45,055	480.07	44,964	478.39	179,124	1,910.19
B	25,886	307.47	37,499	435.37	40,029	480.74	39,529	474.12	142,943	1,697.70
C	20,176	215.05	30,996	380.35	38,722	475.65	35,026	431.78	124,920	1,502.83
D	8,608	106.83	26,242	283.40	37,203	433.70	29,678	308.87	101,731	1,132.80
Total	100,017	1,118.56	138,495	1,561.64	161,009	1,870.16	149,197	1,693.16	548,718	6,243.52

Hold 1- 4 Legend

Non insulated Deck, air passes through (aka Spar Deck)

Insulated, air tight Deck or Tanktop

Non Insulated, air tight Deck

Hatch sizes

	Hold 1	Hold 2	Hold 3	Hold 4
	l x b	l x b	l x b	l x b
Deck	13.00 x 7.85	13.00 x 7.85	13.00 x 7.85	13.00 x 7.85
A	7.00 x 8.00	7.00 x 8.00	7.00 x 8.00	7.00 x 8.00
B	7.00 x 8.00	7.00 x 8.00	7.00 x 8.00	7.00 x 8.00
C	7.00 x 6.00	7.00 x 8.00	7.00 x 8.00	7.00 x 8.00

Container Carrying Capacity	Max FEU's	Add. TEU's	Max TEU's	Add. FEU's	
On Weather Deck and Hatches					
Empty Positions	Standard	106	0	212	0
Max Stackweight	Standard	106	0	212	0
Max Stackweight - Self-sustained	Standard	106	0	212	0
Reefer Hold					
Empty Positions	Standard	36	0	72	0
Max Stackweight	Standard	36	0	72	0
Max Stackweight - Self-sustained	Standard	36	0	72	0
Empty Positions	High Cube	36	0	72	0
Max Stackweight - Self-sustained	High Cube	36	0	72	0

'Max Stackweight' and 'Max Stackweight - Self-sustained' are the number of laden containers that can be loaded basis the maximum stackweight, calculating 26 mt gross for a laden FEU and 14 mt gross for a laden TEU

Above figures are as per vessel's technical layout. Actual container intake is subject to master's approval and depending on stability, stackweight and visibility.



EMERALD

548,718 cbft / 6,244 sqm / 6,650 pallets

Standard Voyage Container Carrying Capacity

Nr of High Cube (9.5') Reefers	96
of which Selfsustained	96

'Standard Voyage' = voyage from Panama Canal to Rotterdam, with a full cargo of bananas in the holds and departing with full bunker tanks. Containers on this voyage are considered to weigh 26 mt gross.

Reefer Plugs

Nr. of electrical Reefer Plugs	106
--------------------------------	-----

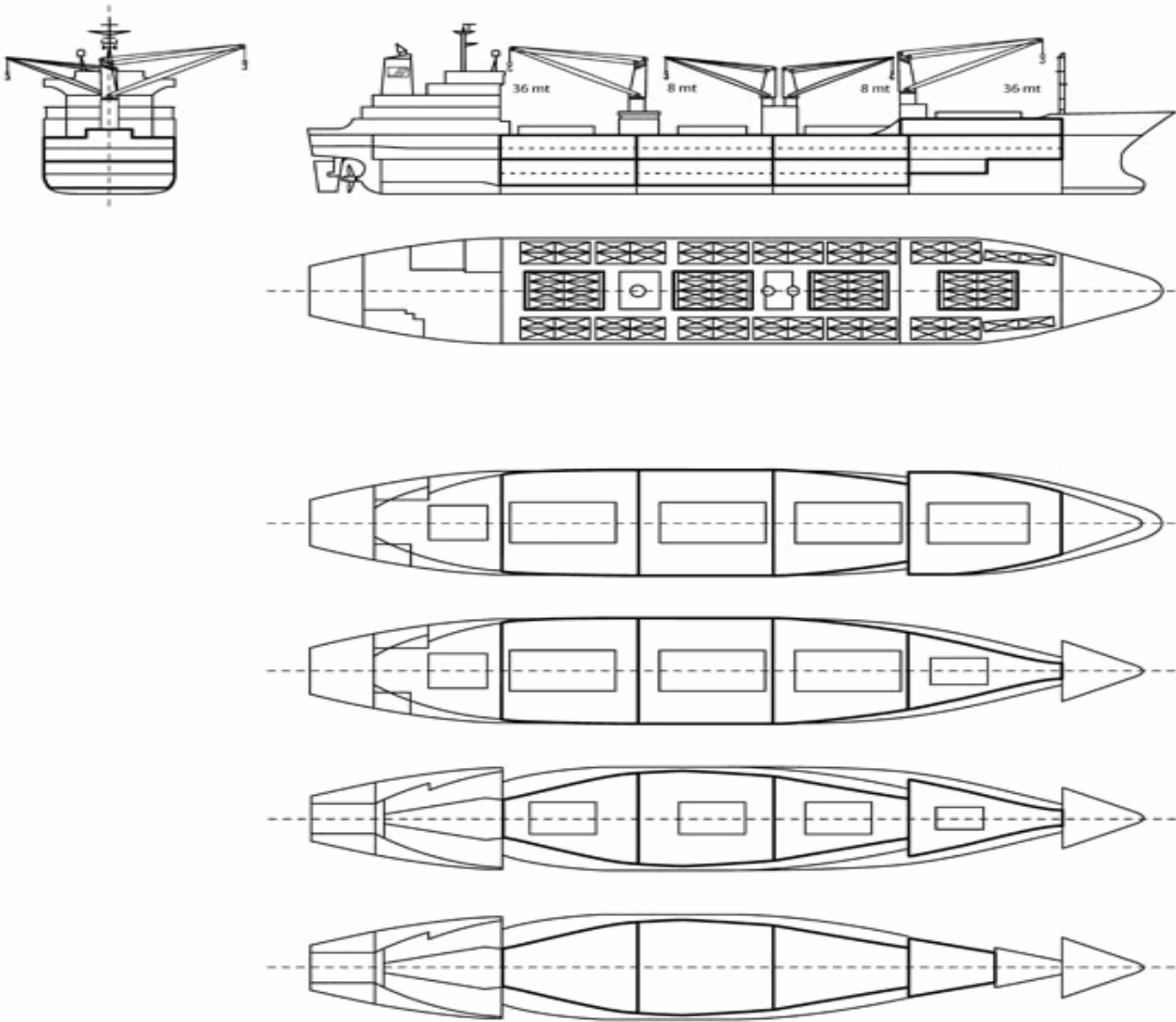
Cargo Gear

2 Cranes x 36.0 mt
2 Cranes x 8.0 mt



EMERALD

548,718 cbft / 6,244 sqm / 6,650 pallets



General Remarks

- Pallet Intake figures are indication only. The figures are based on a stowage factor of 1.32 pallet/sqm in reefer holds, full load of reefer containers based on the standard voyage with 20 pallets in each container

